

# 2026 Study Abroad Student Guide



Creative  
thinkers  
made here.



# Vice-Chancellor's message

Welcome to the 2026 Study Abroad Student Guide for Edith Cowan University (ECU), where your journey to a future full of opportunities begins! At ECU, we believe in offering an education that is as inspiring as it is impactful, setting you on a path to achieve your dreams and make a meaningful difference in the world.

With an unwavering reputation for excellence, ECU has proudly upheld its 5-star rating for undergraduate teaching quality for 18 consecutive years, equal to the best in Australia (Good Universities Guide). Celebrated for our innovative teaching methods, dedicated student support, and exceptional learning environments, we are committed to delivering an education that not only prepares you for a successful career but also for a lifetime of growth and achievement.

In 2026, we continue our dedication to providing a world-class experience, enhanced by state-of-the-art facilities, robust industry connections such as Apple and IBM, and a vibrant, inclusive community that celebrates diversity and empowers every individual. We are thrilled to welcome international students to ECU City, a new campus in the heart of Perth, where creative industries intersect with business and technology.

Our range of courses is designed to cater to the varied passions and ambitions of our students. Whether you are interested in exploring the world of business, education, science, the arts, technology, health, engineering, or social sciences, ECU has a program tailored for you. Our academic members are experts in their fields, dedicated to delivering a curriculum that combines academic rigour with practical experience.

As an ECU student, you will benefit from our emphasis on hands-on learning and work-integrated placements. We partner with industry leaders to offer you experience that will build your confidence, enhance your skills and make you a sought-after graduate. Our graduates are recognised not only for their technical expertise but for their creative thinking, resilience and the ability to drive positive change.

Choosing ECU means choosing a university that puts you first – your ambitions, your goals and your potential to excel. We are excited to welcome you to our community of driven, passionate and curious minds. Take the next step toward your future and discover what makes ECU a university like no other.

**Professor Clare Pollock**  
Vice-Chancellor and President







# At a glance

Study Abroad at ECU	4
Important Dates	5
About ECU	6
Why Study at ECU	7
About Study Abroad	8
Student Life	10
Study in Perth	12
Study Areas	14
Undergraduate Course Options	16
Postgraduate Course Options	23
How to Apply	25
Campus Locations	26
Student Accommodation	28



# Study Abroad at ECU

**A Study Abroad program is the perfect way to expand your global citizenship. Live, work, and study in Australia, immerse yourself in the culture, and develop a deeper understanding of how you can contribute to the world.**

From the time you enquire to the time you enrol, our expert staff will guide you. We can help you select your units, submit an application, accept your place and explore what else ECU has to offer so you can make good use of your time abroad.

Students come from all over the world to study with ECU and each has their own unique experience.

You can also chat to some of our current International Student Ambassadors to hear their experience first hand.



Chat to a Student Ambassador –  
[ecu.edu.au/degrees/international/ask-a-student](https://ecu.edu.au/degrees/international/ask-a-student)



“At ECU you will make amazing friends, and be provided with opportunities to enhance your future that will leave you with meaningful memories.”

**Riley Gullino (USA)**

International Business student from the USA



“I recommend 100% studying at ECU. The lectures are really captivating, and the opportunities have been fantastic.”

**Joshua Scott**

ECU Sport Business student from the UK





# Important Dates

## Semester 1, 2026

<b>Orientation</b>	16th - 20th February
<b>Semester Commences</b>	23rd February
<b>Mid Semester Break</b>	6th - 10th April
<b>Study Week</b>	1st - 5th June
<b>Review and Examination</b>	8th - 19th June

## Semester 2, 2026

<b>Orientation</b>	20th - 24th July
<b>Semester Commences</b>	27th July
<b>Mid Semester Break</b>	28th September - 2nd October
<b>Study Week</b>	2nd November - 6th November
<b>Review and Examination</b>	9th November - 20th November

## Orientation

Orientation happens one week before the start of each semester and it's a great way for new students to adjust to uni life.

You'll get to meet teaching staff and new students, find your way around campus and understand where to go for our many student support services.

Note: Semester 2 details correct at time of print and subject to change.

→ For more details on important dates visit — [ecu.edu.au/future-students/applying/important-dates](https://ecu.edu.au/future-students/applying/important-dates)







# About ECU

**Edith Cowan University, or ECU, is the youngest of the five universities in Western Australia (WA). And like the youngest in any family, we're on a mission to be noticed!**

We are rated one of the world's best young universities under 50 years old. And we've already set a standard for the quality of university teaching in Australia, being rated 5 stars in the Good Universities Guide for 18 straight years!

Speaking of high standards, you won't find better support services to help you navigate your studies and adjust to your new home than at ECU! We put our students first.



For more information, visit –  
[ecu.edu.au/international](https://ecu.edu.au/international)



# Why study at ECU?

Here are some more reasons to choose ECU for your university experience.



## Get career ready while you study

During your studies, we'll help you build your personal brand to prepare you for a new or improved future career.



## Feel right at home on campus

Your university experience is made even better at our safe and welcoming campuses, where you'll have plenty of modern facilities and cool study spaces.



## Learn with leaders

As a student, you'll benefit from the expertise and industry experience of our world-class researchers and teaching academics.



## Grow your professional network

You'll have opportunities to make new contacts and connections thanks to many of our industry partners.



## Become a creative thinker

Problem solving and creative thinking skills are highly valued by employers around the world, and we'll help you make this your superpower.



## Know you'll be supported

We have a great reputation for student support and will help you adjust to your new life here, whatever your study or personal challenges.



## Join our international community

Make new friends with students who've come to Perth from over 100 countries around the world.



## Transferable qualifications

ECU degrees are internationally-recognised and many of our courses are professionally-accredited by national and international professional bodies and organisations.



## Get practical experience outside the classroom

You'll quickly turn theory into practice with work experience opportunities like internships, practicum placements and other work integrated learning.

What that means is your ECU qualification will help you find work around the world, including in your home country.

## Top rated university



**World University Rankings**  
2025 **TOP 400**

Ranked in the world's top 100 universities under 50 years old.



**QILT**

Quality Indicators for Learning and Teaching

The top public university in Australia for undergraduate overall experience.



Rated 5 stars for undergraduate teaching quality for 18 straight years in a row.



Find out more –  
[ecu.edu.au/5star](https://ecu.edu.au/5star)

# What you should know about Study Abroad at ECU

**Study Abroad is a fantastic learning abroad experience. We want to make sure you create the best program, so we've outlined three key things you should know.**







## 1 Study Abroad course codes

You can study for up to 2 semesters as a Study Abroad student. The courses are:

- X01 Study Abroad Undergraduate One Semester
- X17 Study Abroad Undergraduate Two Semesters
- X02 Study Abroad Postgraduate One Semester
- X18 Study Abroad Postgraduate Two Semesters

## 2 Selecting your units

You can choose units from all of our eight Schools to create a unique study program of 3-4 units per semester.

Here is how to select your units:

- Head to pages 15-24 of this guide to check out some popular units
- Search an ECU degree for units that match your interest (e.g. Bachelor of Laws)
- Head to the ECU Handbook and search by keyword to find a unit  
**[www.ecu.edu.au/handbook](http://www.ecu.edu.au/handbook)**
- Chat to an ECU Authorised Agent  
**[www.ecu.edu.au/future-students/applying/find-an-authorised-agent](http://www.ecu.edu.au/future-students/applying/find-an-authorised-agent)** or email ECU Staff  
**[international.partnerships@ecu.edu.au](mailto:international.partnerships@ecu.edu.au)**
- Undergraduate and Postgraduate Study Abroad applicants require an Academic IELTS overall minimum band score of 6.0, with no individual band less than 6.0.



Visit the English competency page for more information –  
**[ecu.edu.au/future-students/course-entry/english-competency](http://ecu.edu.au/future-students/course-entry/english-competency)**

## 3 Tuition fees

In 2026, the Study Abroad tuition fees are split into Group A and Group B:

### FEE Group A

Includes hundreds of units from disciplines in arts, business, computing, design, economics, teacher education, humanities, law, mathematics, science (non lab-based), some medical and health sciences disciplines and social science:

- 45 Credit Points (3 x 15CP units)  
Study Abroad fee: \$6,075
- 60 Credit Points (4 x 15CP units)  
Study Abroad fee: \$8,100

### FEE Group B

Includes a special selection of units in the disciplines of engineering, nursing, medical and health sciences and science (lab-based):

- 45 Credit Points (3 x 15CP units)  
Study Abroad fee: \$9,090
- 60 Credit Points (4 x 15CP units)  
Study Abroad fee: \$12,120

## Use our fees calculator

There may sometimes be variations in pricing for different units given the level of study.

To make sure you have the pricing right, check the tuition fees using our Fees Calculator **[myfees.ecu.edu.au](http://myfees.ecu.edu.au)**.

1. Select 'International Onshore Student' and your preferred study level.
2. Select 'unit' in the drop down.
3. Under 'Summary of your selection', click 'Study level' and select 'Study Abroad'
4. Search for the units you would like to study using the name or unit code.



# Life as a student

**It doesn't matter if you've just left high school or you haven't been a student for a few years, studying at university is a whole new world.**

The good news is, no matter what your study challenges, we're ready to help you succeed.

## Adjusting to study whatever your situation

At ECU, we'll support you through your studies whatever your personal circumstances.

Our Access and Inclusion team will work with you to identify reasonable adjustments to your study and uni life.

This includes if you have a medical condition or disability or have responsibilities for caring for a family member in a similar situation. It might also include ensuring you can continue to observe any cultural or religious practices.

## Adjusting to academic life

Learning at university can be a bit daunting to begin with, but we've got you covered whatever help you need.

That includes help with preparing assignments, help with researching or referencing, help with online study and loads more. You can even get a peer leader in your first semester!

## Free counselling service

If you need to discuss any personal issues that may be affecting your ability to study, we have a free, professional and confidential counselling service.

## Career advice and job skills

You can get support and resources to help you plan your future career, as well as find work or volunteering experience while you're a student.

This includes career-based workshops, industry events, one-to-one career advice and more.

## Student health services

All ECU campuses have health centres with doctors (GPs), nurses and allied health services to assist you if you need them.

## Sport and fitness

Staying active can help sharpen your mind and reduce the stress of assignments and exams.

ECU has fantastic sport and fitness facilities, designed to support your health and wellbeing. You can also join group fitness classes tailored for everyone, or drop into fun social sports and competitive representative events.

## Childcare for parents

If you're a student with children, our campuses provide short term care (Crèche) and long term care (Day Care) at select locations.

## Wellbeing and mental health

The Living Room is a safe and inclusive space where you can drop in to have a relaxed chat with a trained peer who understands the journey you are going on as a student.







## ECU Student Guild

ECU Student Guild is run by ECU students and provides academic, social and financial assistance. The Guild organises regular social events on campus and supports the many and varied student clubs at ECU. Joining a club is a great way to meet new people and enhance your university experience. They also run a second-hand bookshop with an excellent range of used textbooks. Best of all, Guild membership is free for all students.



For more information –  
[ecuguild.org.au](http://ecuguild.org.au)

## ECU's International Café

Being an international student is an exciting opportunity – you get to build new friendships and amazing international contacts. But it can also be a little overwhelming. ECU invites international students to come along and share a coffee and afternoon tea, while learning about living and studying in Australia at International Café. Each week hear from international students who have been in your shoes. Discover tips for balancing study and life, and other fun information such as the best hidden spots around Perth. You will also hear from different guest speakers each week about services and activities available to you. This is a great opportunity to meet other new international students from across the globe and get to know some of your fellow students a little bit better. All over a coffee and bite to eat!



# Why study in Perth, Western Australia?

**With a high standard of living, Perth is a vibrant, sophisticated and safe city that is regularly rated among the top cities in the world for liveability.**

The mild Mediterranean climate, endless blue skies, fresh air and brilliant white beaches are hard to beat!

In fact, Perth offers such an attractive lifestyle that students consistently rank it as a desirable study destination<sup>1</sup>



## Cost of living

Perth has been consistently rated as one of the top fifteen most liveable cities in the world for over 15 years (source: The Global Liveability Index 2024).

Even better, day-to-day living costs in Perth for international students are lower than some of the other major cities in Australia (and worldwide), making it one of the most affordable destinations to study in<sup>2</sup>.



## Climate

Perth has a Mediterranean climate with hot, dry summers and mild, wet winters. It is the sunniest capital city in Australia with clear blue skies an incredible 70% of the year!

Our warm weather and clean air allow us to enjoy a year-round outdoor lifestyle as we make the most of our state's natural beauty.



## Convenience & transport

Perth offers convenience and connection with an expansive public transport network that includes buses, trains and ferries. Bus and train stations are conveniently located near our campuses, making transport to and from your studies quick, easy and affordable.



## Diversity

Communities from around the world call Perth their home, with people from more than 200 different countries living, working and studying in Western Australia.

They speak as many as 240 languages and dialects and represent more than 100 religions.



## Student employment

Working whilst studying gives international students the opportunity to earn some money, make connections and learn valuable skills. Students typically work in administrative, hospitality and retail roles, and student visa holders can work part-time up to 48 hours per fortnight, and full-time during semester breaks.



## Waiver for dependants

Dependants of Master's or Doctoral degree students can attend the West Australian public school system without paying the mainstream tuition fee that usually applies to overseas students.



## Support services available through StudyPerth

StudyPerth offers a variety of free support services for international students to help them every step of the way. The aim of StudyPerth is to provide students with resources to help them settle in their new home and connect students with the various support services available to them.



StudyPerth –  
[www.studyperth.com.au](http://www.studyperth.com.au)



<sup>1</sup>Source: QS Best Student Cities 2025

<sup>2</sup>Source: StudyPerth



# ECU City opening in 2026



**ECU City represents the future of university education – a place where technology, industry and creativity meet to deliver the creative thinkers the world needs.**

Located at the heart of Perth's commercial, cultural and entertainment districts, ECU City will feature state-of-the-art spaces for study and collaboration, cutting-edge learning and technology facilities, and world-leading performance venues.

ECU City will open to students from semester one, 2026.



Find out more –  
[ecu.edu.au/degrees/ecu-city](https://ecu.edu.au/degrees/ecu-city)



# Our study areas

**At ECU, we group similar fields of work into eight diverse study areas that align with our teaching schools. All of our courses are industry-relevant and internationally-recognised and most are professionally-accredited.**

## Arts and Humanities

Arts and Humanities at ECU offers great opportunities to become a savvy, problem-solving, future-building advocate, thinker, and maker! Whether in creative humanities, or across a range of psychology, criminology and social science offerings, our courses provide excellent career opportunities in the caring and creative professions.

## Medical & Health Sciences

Medical and Health Sciences offers exciting and diverse areas of study and some of ECU's world-leading research teams. Courses include biomedical science, health science, exercise and sports science, occupational therapy, paramedical science, speech pathology, nutrition and dietetics, medical sonography and public health.

## Business and Law

Business and Law at ECU offers an exciting mix of courses and majors that combine the latest theory with practical experience, leading to a diverse choice of careers. Students can expect a practical experience and to learn essential employability skills to help them succeed in a variety of dynamic global business environments.

## Engineering & Technology

At ECU's School of Engineering you'll study in some of the best-equipped, industry-grade engineering labs in Australia, with the opportunity to work on real-world projects and develop strong contacts through industry engagements, events and internships. With an ECU engineering degree, you'll graduate able to work globally and capable of meeting the challenges of the future.





## Teacher Education

ECU has been at the forefront of teacher education for over 100 years and has a strong reputation for the quality of its graduates. The experienced academic team are world leaders in tertiary teaching in the area of teacher education and strive to find better ways to prepare quality teachers.

## Nursing & Midwifery

ECU produces some of the highest quality nursing and midwifery graduates in Western Australia and is recognised as a top 150 nursing program worldwide. Students have access to state-of-the-art health and wellness facilities, practical placements with a range of health providers and WA's only nursing and midwifery dual degree program.

## Western Australian Academy of Performing Arts

The Western Australian Academy of Performing Arts (WAAPA) at ECU is one of the world's leading performing arts academies. WAAPA is recognised nationally and internationally for the quality of its graduates. It provides the most extensive range of performing arts training in Australia – both on stage and behind the scenes.

## Science

ECU offers a range of courses in the areas of science, biological and environmental sciences, data science, bioinformatics, computing and security. ECU's research and teaching are world-class, with practical degrees that can lead to a variety of careers in fields such as marine and freshwater biology, conservation and wildlife biology, environmental management, physics, chemistry, mathematics, cyber security and horticulture.





# Undergraduate Options

Here is a list of our most popular units. For a full list of unit options available to you, please visit [www.ecu.edu.au/handbook](http://www.ecu.edu.au/handbook).

Please note unit availability is subject to change.

## Campus key

**JO** Available at the Joondalup Campus | **CITY** Available at the ECU City Campus

**SW** Available at ECU South West, Bunbury | \*This unit has a prerequisite and is subject to ECU approval.

Additional units, as well as detailed information on unit content, credit points and learning outcomes are published online in the ECU Handbook: [ecu.edu.au/handbook](http://ecu.edu.au/handbook)

## Arts and Humanities

Unit Code	Unit Title	Sem 1	Sem 2	Fee
<b>Art and Design</b>				
PH01625	Camera Work and Lighting	CITY	-	A
DES1615	Design Knowledge	-	CITY	A
DES1605	Design Prototyping	-	CITY	A
DES1620	Design Thinking	-	CITY	A
VIS1810	Drawing	CITY	-	A
PH02605	Photography and Darkroom Practices	CITY	-	A
PH02610	Photography Reimagined	-	CITY	A
DES2114	Strategic Visual Communication	-	CITY	A
VIS2815	Time Based Art	-	CITY	A
<b>Communication</b>				
CMM1605	Communication Campaigns	CITY	-	A
CMM2600	Digital Content Creation	CITY	-	A
CMM1600	Foundations of Advertising	CITY	-	A
CMM1615	Media Content Strategy	-	CITY	A
CMM2610	Strategic Branding	-	CITY	A
<b>Creative Writing, Journalism, and Literature</b>				
WRT1600	Creative Writing	CITY	-	A
JBM2600	Storytelling and Social Media Influence	-	CITY	A

Unit Code	Unit Title	Sem 1	Sem 2	Fee
<b>Creative Writing, Journalism, and Literature (cont.)</b>				
WRT2605	Writing Creative Non-Fiction	-	CITY	A
WRT1610	Writing Short Stories	-	CITY	A
WRT3600	Speculative Fiction	CITY	-	A
<b>Counselling, Criminology, and Psychology</b>				
PSY1210	Biopsychology, Sensation and Perception	-	JO	A
CRI1103	Criminology	JO	-	A
COU1101	Dynamic Models of Counselling	JO	-	A
PSY1101	Introduction to Psychology	JO	-	A
PSY1115	Psychology of Motivation and Emotion	JO	-	A
COU1102	Self Development 1	-	JO	A
CRI1104	The Psychology of Criminal Behaviour	-	JO	A
COU1201	Therapeutic Practice with Families and Couples	JO	-	A
<b>Screen Production</b>				
SPR1600	Introduction to Screen Practice	CITY	-	A
SPR1605	Screen Evolution	CITY	-	A
SPR2600	Screenwriting	CITY	-	A
<b>Youth Work, Social Work, Social Sciences</b>				
SWK2112	Australia Politics and Policy	-	SW	A
SWK2114	Community Health and Well-Being	-	SW	A
CSV1103	Interpersonal and Helping Skills	JO	-	A
YWK1101	Principles of Youth Work	-	JO	A
CSV1203	Working with Groups	JO	-	A
YWK1220	Youth Issues	JO	-	A

### Fee calculator

To calculate the cost of your preferred units for study abroad, use ECU's fee calculator.

Select 'International Onshore Student' and your preferred study level.



Visit – [myfees.ecu.edu.au](http://myfees.ecu.edu.au)

Select 'unit' in the drop down.

Under 'Summary of your selection', click 'Study level' and select 'Study Abroad'

Search for the units you would like to study using the name or unit code.



## Business and Law

Unit Code	Unit Title	Sem 1	Sem 2	Fee
<b>Accounting and Finance</b>				
SBL1200	Accounting and Finance Essentials	CITY	CITY	A
ACC3201*	Accounting Information Systems	CITY	CITY	A
ECF1120	Principles of Finance	CITY	CITY	A
ACC2700*	Financial Reporting Standards	CITY	CITY	A
<b>Business Identity and Sustainability</b>				
SBL1500	Ethics and Responsibility in Business	CITY	CITY	A
MAN2610	Managing for Sustainability	CITY	-	A
SBL1800	Work and Career	CITY	CITY	A
<b>Hospitality</b>				
HOS2110	Food and Beverage Management	CITY	-	A
TSM3101	International Resort Management	CITY	-	A
HOS2325	Managing the Service Experience	-	CITY	A
HOS2220	Rooms Division Management	CITY	-	A
<b>International Business</b>				
SBL2100	Cultural Business Intelligence	CITY	-	A
INB3303	Global Trade	-	CITY	A
INB2102	International Business	CITY	-	A
<b>Law and Legal Studies</b>				
LAW3855	Human Rights Law	CITY	-	A
LAW2106	Intellectual Property Law	-	CITY	A
LAW1100	Introduction to Business Law	CITY	CITY	A
LAW2605	Security and Intelligence Governance	-	CITY	A
SPM3113*	Sport and Leisure Law	CITY	-	A
LAW2108	Workplace Laws and Regulation	CITY	-	A

Unit Code	Unit Title	Sem 1	Sem 2	Fee
<b>Global Sport Business and Event Management</b>				
TSM3501	Event Operations Management	-	CITY	A
TSM2202	Introduction to Event Management	CITY	CITY	A
SPM2510	Marketing in Global Sport Business	-	CITY	A
SPM3655	Sport and Events Funding and Finance	CITY	-	A
SPM1102	Sport and Recreation Leadership and Programming	CITY	-	A
SPM2111	Sport Organisation Management	-	CITY	A
<b>Tourism</b>				
HOS3100	Hospitality and Tourism Management	CITY	-	A
TSM2111	Introduction to Hospitality and Tourism	CITY	-	A
TSM3610	Sustainable Tourism Development	-	CITY	A
TSM2650	Travel, Destination and Visitor Management	-	CITY	A
<b>Work Integrated Learning</b>				
FBL3501	Business Practicum	-	-	A
<b>Entrepreneurship &amp; Innovation</b>				
ENT2001	Introduction to Entrepreneurship	CITY	-	A
ENT2002	Funding and Resourcing for Entrepreneurship & Innovation	-	CITY	A
ENT2612	Innovative and Practical Projects	-	CITY	A
ENT3003	Disruptive Innovation and Entrepreneurship	CITY	-	A
ENT3004	Entrepreneurship Innovation Incubator	-	CITY	A
ENT3002	Social Entrepreneurship & Innovation	-	CITY	A
ENT3001	Entrepreneurship in Practice	-	CITY	A

### Work Integrated Learning (WIL)

If you choose to study WIL units in the School of Business and Law, you have the option to take part in a hands-on professional practice experience with industry or community partners. These WIL opportunities let you apply what you've learned in class to real-world situations, gain valuable work experience for your CV, and connect with professionals in your field. It's a great way to build the skills and knowledge you'll need to succeed in your career.



## Engineering

Unit Code	Unit Title	Sem 1	Sem 2	Fee
<b>Aviation</b>				
SCA1125 *	Fundamentals of Flight	JO	-	B
SCA1117 *	Human Factors in Aviation	-	JO	B
<b>Chemical Engineering</b>				
ENS3111 *	Chemical Thermodynamics	-	JO	B
ENS5561*	Minerals and Solids Processing	JO	-	B
ENS3113*	Reaction Engineering	-	JO	B
<b>Civil, Civil and Environmental Engineering</b>				
ENS5112 *	Construction Site Management	-	JO	A
ENS5252 *	Construction Technology	JO	-	B
ENS5161 *	Environmental and Process Risk Management	JO	-	B
ENM3218 *	Fluid Mechanics	JO	-	B
ENS3190 *	Mechanics of Solids	-	JO	B
ENS3242 *	Soil Mechanics and Foundation Engineering	JO	-	B
ENS2260 *	Surveying and Site Measurement	JO	-	A
ENS5214 *	Transportation Engineering	JO	-	B
<b>Electrical</b>				
ENS2457 *	Analog Electronics	-	JO	B
ENS2344 *	Computer Architecture	JO	-	B
ENS5253 *	Control Systems	JO	-	B
ENS3554 *	Data Communications and Computer Networks	JO	-	A
ENS2456 *	Digital Electronics	JO	-	B
ENS5251*	Digital Signal Processing	-	JO	B
ENS3551*	Electrical Networks	JO	-	B
ENM2104 *	Instrumentation and Measurement	JO	-	B
ENS2257 *	Microprocessor Systems	-	JO	B
ENS3215*	Power Electronics	JO	-	B
ENS3206*	Power Systems 1	-	JO	B
ENS5447 *	Propagation and Antennas	JO	-	B
ENS5204 *	Real-time Embedded Systems	-	JO	B
ENS5562 *	Renewable Energy Conversions 1	JO	-	B
ENS5442 *	Robotics 1	JO	-	A
ENS3553 *	Signals and Systems	-	JO	B
ENS5445 *	Sustainability and Renewable Energy	-	JO	B
ENS3556 *	Wireless Communication	-	JO	B

Unit Code	Unit Title	Sem 1	Sem 2	Fee
<b>Mechanical engineering</b>				
ENS5191 *	Electrical engineering design	-	JO	B
ENS3212*	Electrical Machines and Transformers*	-	JO	B
ENS1115 *	Materials and Manufacturing 1	JO	-	B
ENS3105 *	Mechanical Design and Development	JO	-	B
ENS2170 *	Principles of Industrial Maintenance	JO	-	B
ENS2160 *	Thermodynamics	-	JO	B
ENS5216 *	Advanced Thermofluids	-	JO	B
<b>Petroleum Engineering</b>				
ENS5162 *	Drilling Engineering	-	JO	B
ENS3125 *	Petroleum Geology	-	JO	B
ENS2115 *	Process Engineering Fundamentals	JO	-	B
ENS2270 *	Reservoir Petrophysics and Formation Evaluation	JO	-	B
ENS3301*	Reservoir Thermodynamics and Fluid Properties	JO	-	B
ENS5564 *	Unconventional Oil and Gas Resources	JO	-	B
<b>Motorsports</b>				
ENM2209 *	Race Car Systems	JO	-	B

## Kurungkurl Katitjin

Unit Code	Unit Title	Sem 1	Sem 2	Fee
<b>Indigenous Studies</b>				
ACS4133 *	Aboriginal Communities	JO	-	A
SCH1101*	Cultural Studies	JO	JO	A
IAS3110 *	Indigenous Australians, Cultural Competence and Speech Pathology	-	JO	A
IAS3100 *	Indigenous Health	-	JO	A

These units are subject to change in line with ECU's Curriculum Transformation Project. Please check the online handbook for the most up to date information: [www.ecu.edu.au/handbook](http://www.ecu.edu.au/handbook).





## Medical & Health Sciences

Unit Code	Unit Title	Sem 1	Sem 2	Fee
<b>Exercise and Sports Science</b>				
SPS1301	Anatomical and Physiological Basis of Human Movement	JO	-	B
SPS2209	Assessment of the Football Player	JO	JO	A
SPS1840	Biomechanics and Skill Acquisition	-	JO	A
SPS2750	Coaching Science 3	JO	-	A
SPS1109	Fundamentals of Football Coaching	JO	-	A
SPS3604	Human Movement - Participation and Inclusion	-	JO	A
SPS1525	Lifespan Growth and Development	JO	-	A
SPS3120	Psycho-social Aspects in Physical Activity and Chronic Disease	JO	-	A
SPS2615	Sports Injury Prevention and Management	JO	-	A
<b>Health Promotion, Nutrition and Addiction Studies</b>				
ADS1151	Addiction Studies: Fundamental Concepts	JO	JO	A
HST3100	Child and Adolescent Health	JO	-	A
HST2120	Community Development in Health Promotion	JO SW	-	A
HST1109	Epidemiology	-	JO SW	A
NUT1111	Food and Nutrients	-	JO SW	A
NUT3231*	Food Habits and Trends	JO	-	A
HST2220	Health Promotion Planning and Administration	-	JO SW	A
NUT1121	Human Nutrition	JO SW	JO	A
NUT1112	Nutrition and Public Health	JO	SW	A
NUT2210*	Nutrition in the Life Cycle	JO	-	A
<b>Medical and Biomedical</b>				
MMS2103	Clinical Biochemistry	-	JO	B
HST2184	Communicable Disease Control	-	JO	A
MMS3101	Evolutionary Perspectives on Health and Disease	JO	-	B
SCH2143	Forensic Skills	-	JO	B
SCH1111	Fundamental Biomedical Techniques	JO	-	B
MMS3115 *	Histopathology and Applied Histotechniques	-	JO	B
SCH1132	Human Evolution and Ecology	-	JO	B
SCH1133	Human Genetics	JO	-	B

Unit Code	Unit Title	Sem 1	Sem 2	Fee
<b>Medical and Biomedical</b>				
SCH3239	Human Immunology	JO	JO	B
MMS2101	Introduction to Haematology	-	JO	B
MMS2200	Introduction to Histology and Histotechniques	JO	-	B
SPS1530	Lifespan Growth and Development	JO	-	B
MMS3112	Safety and Quality in Healthcare	JO	JO	B
<b>Occupational Health and Safety</b>				
HST2184	Communicable Disease Control	JO	-	A
OHS1120	Occupational and Environmental Health and Safety Science	JO	-	A
<b>Paramedical Science</b>				
PST3210	Prehospital Perspectives in Emergency Management	JO	JO	A
SCH2204	Prehospital Policy, Ethics and Legal Issues	JO	JO	A
<b>Speech Pathology</b>				
SPE1102	Language Across the Lifespan	JO	JO	A
SPE1103	Language Models and Analytical Frameworks	-	JO	A





## Nursing and Midwifery

Unit Code	Unit Title	Sem 1	Sem 2	Fee
<b>Nursing</b>				
NUM1102 *	Communication Skills for Nurses and Midwives	SW	JO	B
NUM2307 *	Mental Health and Wellbeing in Clinical Practice 1	SW	JO	B
NUM1308*	Aboriginal and Torres Strait Islander Peoples' Health and Wellness	JO	JO SW	B
NUR1402*	Older Adult Health	JO	JO SW	B
NUM1101*	Nursing and Midwifery in the Australian Healthcare Context	JO SW	JO	B
FCA2303*	Chronic Conditions and Supportive Care	JO SW	JO	B
NUM2307*	Mental Health and Wellbeing in Clinical Practice	JO SW	JO	B
NUM3505*	Interprofessional Practice in Health Care	JO SW	JO	B
NUR3503*	Children and Young People's Health and Wellbeing	JO SW	JO	B
NUM3605*	Leadership, Governance and Organisational Culture in Health Care	JO	JO SW	B
NUM3511*	Primary Health Care in Nursing and Midwifery Practice	JO	JO SW	B
NUM3204*	Clinical Reasoning and Research in Practice	JO	JO SW	B

## Science

Unit Code	Unit Title	Sem 1	Sem 2	Fee
<b>Biology and Environmental Science</b>				
SCI2123	Astronomy	-	JO	B
SCI2118	Australian Biota	-	JO SW	B
SCI1182	Case Studies in Science	-	JO	B
SCI1185	Ecology	-	JO SW	B
SCI1187	Form and Function in Biology	JO SW	-	B
SCM2104	Geographical Information Systems	-	JO SW	B
GEO1150	Geography and Environment: People, Pattern, Process	JO	-	A
SCI1193	Introduction to Environmental Science	-	JO	B
SCI1001	Introduction to Sustainability	JO	-	A
SCI1183	Origins and Evolution of Life	-	JO SW	B
SCI1192	Physical Environments	JO SW	-	B
SCI1125	Professional Science Essentials	JO SW	JO	B

Unit Code	Unit Title	Sem 1	Sem 2	Fee
<b>Chemistry</b>				
SCC1123	Chemistry for the Life Sciences	JO SW	JO	B
SCC1111*	General Chemistry	JO	-	B
<b>Mathematics and Physics</b>				
MAT1108	Foundations of Mathematics	JO	JO	A
SCP1134	Foundations of Physics	-	JO	B
SCP1132	Introduction to Physics	JO	-	B
MAT1137*	Introductory Applied Mathematics	JO	JO	A
MAT1114	Introductory Statistics	JO SW	JO	A
MAT1250*	Mathematics 1	JO	JO	A
MAT1251*	Mathematics 2	-	JO	A
MAT1252	Mathematics for Computing	JO	JO	A
SCP1111*	Physics of motion	JO	-	B
SCP1112*	Waves and Electricity	-	JO	B
<b>Security and Computing</b>				
CSG1105	Applied Communications	JO	JO	A
SCY2120	Applied Intelligence	-	JO	A
SCY1108	Building Management Systems	-	JO	A
CSI1101	Computer Security	JO	JO	A
SCY2112	Counterterrorism	-	JO	A
CSG2132	Enterprise Data	JO	-	A
CSI2102	Information Security	-	JO	A
SCY1117	Intelligence Foundations	JO	-	A
CSP2108	Introduction to Mobile Applications Development	-	JO	A
CSP1150	Programming Principles	JO	JO	A
CSP2101	Scripting Languages	JO	-	A
SCY2108	Security Control Systems	JO	-	A
SCY1118	Security Foundations	JO	-	A
SCY2109	Surveillance Systems	JO	-	A
CSI1241	Systems Analysis	JO	JO	A
CSG1207	Systems and Database Design	JO	JO	A
SCY2107	Threat Detection Systems	-	JO	A





## Education

Unit Code	Unit Title	Sem 1	Sem 2	Fee
<b>Early Childhood Education</b>				
ECS2260 *	Assessing and Evaluating Young Children's Learning	-	JO SW	A
AED1240	Drama Arts in Early Childhood Education	JO SW	-	A
ECM2260	Early Childhood Mathematics 1	JO SW	-	A
ECS2280	Technology in Early Childhood Education	-	JO SW	A
HPE2260	Health and Physical Education for Young Children	-	JO	A
EPA6170	Leading Early Childhood Pedagogy and Practice (0-8 years)	-	JO	A
EPA6175	Leading Family and Community in the Early Years (0-8 years)	JO	-	A
ECS1250	Learning and Learners	JO SW	-	A
ECS1245	Play and Pedagogy	-	JO SW	A
SSE3260	Social Science Education in Early Childhood	JO	-	A
ECS1265	Young Children's Learning and Development	-	JO SW	A
<b>Primary Education</b>				
LIT4260 *	Children's Literature in the Classroom	-	JO	A
LNG4300	Cross Curricula Practice in the Primary Languages Classroom	-	JO	A
LAN3240	English for Speakers of Other Languages or Dialects	-	JO SW	A
LAN2240 *	English in the Early Years of Primary School	JO SW	-	A
MAE1250	Foundations of Primary Mathematics	JO SW	-	A
HSS2240	Humanities and Social Science in Primary Schools 1	JO SW	-	A
HSS2260	Humanities and Social Science in Primary Schools 2	-	JO SW	A
EDS3240 *	Including Children with Special Educational Needs	JO SW	-	A
EDU4271 *	Managing the Behaviour of Students with Special Educational Needs	JO SW	JO	A
EDU2260	Positive Learning Environments	-	JO SW	A
SCE1260	Science Education in Primary Schools 1	-	JO SW	A
CED4405	Teaching About Jesus in Catholic Schools	-	JO	A
CED4400	Teaching About Sacraments in Catholic Schools	JO	-	A

Unit Code	Unit Title	Sem 1	Sem 2	Fee
<b>Primary Education (cont.)</b>				
CED4410	Teaching About the Gospels in Catholic Schools	-	JO	A
LAN6350	Teaching English to Speakers of Diverse Languages	-	JO	A
SCE4270 *	Teaching Integrated Science in Junior Primary Years	JO	-	A
LNG4200	Teaching Languages in the Primary Classroom Context	-	JO	A
LNG6260	Teaching Languages in the Primary School	-	JO	A
LNG4100	Teaching Languages to Young Learners	JO	-	A
LAN4131	Teaching Reading in the Primary Classroom	JO	JO	A
LAN4132	Teaching Writing in the Primary School	-	JO	A
<b>Secondary Education</b>				
EDU2231*	Creating Positive Learning Environments	-	JO	A
DTE2110	Design and Technology Education 1	JO	-	A
MUE4105	Directing School Music Ensembles	-	JO	A
EDU3104	Diversity in the Secondary Classroom	-	JO	A
HPE2112	Physical Activity, Body, Culture and Identity	-	JO	A
CSE3152*	Teaching Introductory Computer Programming	-	JO	A
DSE2210*	Teaching Senior School Drama	-	JO	A
HPE3101	Teaching Secondary Health Education	JO	-	A
HSS2130	Teaching and Learning in Humanities and Social Sciences	JO	-	A
MSE2101	Teaching Lower Secondary Mathematics	JO	-	A
SCE2101	Secondary Science Education 1	JO	-	A

### Important

Teacher Education Study Abroad unit entry requirements differ from full degree courses. Students wanting to further their study in a full degree course must meet all course entry requirements including English language requirements at time of full degree entry.





## WAAPA

Unit Code	Unit Title	Sem 1	Sem 2	Fee
<b>Dance</b>				
DAN3903 *	Contemporary 3	CITY	CITY	A
DAN3902 *	Performance 3	CITY	CITY	A
DAN3904 *	Related Physical Disciplines 3	CITY	CITY	A
DAN3906 *	Special Topics	CITY	CITY	A
<b>Drama, Theatre and Arts</b>				
ADM2600 *	Arts Organisations Management	CITY	-	A
PAM2016 *	Arts Management	-	CITY	A
BPA2110 *	Australian Theatre & Performance in Context	-	CITY	A
ADM1605 *	Creating the Arts in the Contemporary World	CITY	-	A
BPA3545 *	Creativity and Collaboration in the Performing Arts	CITY	CITY	A
DAN2425 *	Cultural Perspectives 2	-	CITY	A
PAM2121 *	Playwriting Workshop 1	CITY	-	A
BPA2006 *	Site Specific, Participatory and Immersive Performance	CITY	-	A
PAM3104 *	Stage Combat	CITY	CITY	A
PAD3103 *	Theory and Practice of Contemporary Performance	CITY	CITY	A
PAM2103 *	Theory of Directing	CITY	CITY	A
BPA3205 *	Workplace Integrated Learning: Project Exegesis	CITY	CITY	A
BPA3115 *	Workplace Integrated Learning: Written Project Proposal	CITY	CITY	A

Unit Code	Unit Title	Sem 1	Sem 2	Fee
<b>Music</b>				
MUS2526 *	Classic Ensemble 3	CITY	-	A
MUS1563 *	Classic Musicianship 1	CITY	-	A
MUS1341 *	Ensemble Studies 1	CITY	-	A
MUS1342 *	Ensemble Studies 2	-	CITY	A
MUS1381 *	Jazz and Contemporary Musicianship 1	CITY	-	A
MUS1390 *	Music History: Chasin' the Trane - Modern Jazz Takes Hold	-	CITY	A
MUS2614 *	Music History: Electronic Music Overview	-	CITY	A
MUS4608 *	Music History: Film & Media	CITY	-	A
MUS1490 *	Music History: Stax, Motown and All Things Soul	-	CITY	A
MUS1140 *	Music of Our Time: The Australian Musical Landscape	CITY	-	A
MUS2619 *	Sound Recording	CITY	-	A

As WAAPA is one of Australia's most prestigious and comprehensive arts academies, entry into any unit is by audition and/or interview, in addition to standard ECU entry requirements.



# Postgraduate Options

Here is a list of our most popular units. For a full list of unit options available to you, please visit [www.ecu.edu.au/handbook](http://www.ecu.edu.au/handbook).

Please note unit availability is subject to change.

Arts and Humanities					
Unit Code	Unit Title	Sem 1	Sem 2	Fee	
CMM6500	Communication Techniques	CITY	-	A	
CMM6530	Creative Communication	-	CITY	A	
DES5102	Design Thinking	-	CITY	A	
CMM6525	Ethical and Responsible Communication	-	CITY	A	
CMM6505	Strategic Communication	CITY	-	A	
CMM6510	Social and Digital Media Communication	CITY	-	A	

Business and Law				
Unit Code	Unit Title	Sem 1	Sem 2	Fee
ACC6010	Accounting Concepts and Applications	CITY	CITY	A
MAN6307	Agile Projects	CITY	-	A
MKT5325	Applied Digital Marketing	CITY	CITY	A
FBL6530	Business Events Management	CITY		A
MAN6777	Data Driven Managerial Decisions	CITY	CITY	A
ECF6115	Financial Markets and Institutions	CITY	-	A
HOS6504	Global Hospitality Operations Management	CITY	CITY	A
MBP6101	The Business Mind	CITY	CITY	A
MAN5730	Human Resource Management	CITY	CITY	A
MAN6708	Managing Employment Relations	CITY	CITY	A
PRJ5101	Project Management Essentials	CITY	CITY	A
MKT6304	New Product Development	CITY	-	A
MKT6308	Current Issues in Marketing	CITY	CITY	A
LAW6501	Principles of Contract and Corporate Law in Business	JO	JO	A
LAW6300	Principles of Taxation Law	JO	JO	A
Work Integrated Learning				
BUS6900	Management Practicum	-	-	A

Engineering					
Unit Code	Unit Title	Sem 1	Sem 2	Fee	
ENS6144	Engineering Geology and Rock Mechanics	-	JO	B	
ENS5543*	Engineering Management	-	JO	A	
ENS5240*	Industrial Control	-	JO	B	
ENS6146*	Instrumentation and Measurement	JO	-	B	
ENS6138*	Principles of Industrial Maintenance	JO	-	B	
ENS6215*	Power Electronics	JO	-	B	

Medical & Health Sciences					
Unit Code	Unit Title	Sem 1	Sem 2	Fee	
HST6355	Ageing, Health and Wellbeing	JO	-	A	
SCH6245	Clinical Bioinformatics	JO	-	B	
HST6350	Drug Use and Addictive Behaviours	JO	JO	A	
HST5120	Epidemiology	JO	JO	A	
NUT6110	Food Vision	JO	JO	A	
HST6520	Health Science Career Transitions	JO	-	A	
DER6101	Introduction to Emergency Management	JO	-	A	
MMP6102	Medical Science Masters Project	-	JO	B	
SCH6234	Molecular Biology and Genomics	-	JO	B	
HST5161	Public Health: Philosophy, Principles and Practice	JO	JO	A	

## Work Integrated Learning (WIL)

If you choose to study WIL units in the School of Business and Law, you have the option to take part in a hands-on professional practice experience with industry or community partners. These WIL opportunities let you apply what you've learned in class to real-world situations, gain valuable work experience for your CV, and connect with professionals in your field. It's a great way to build the skills and knowledge you'll need to succeed in your career.

## Nursing and Midwifery

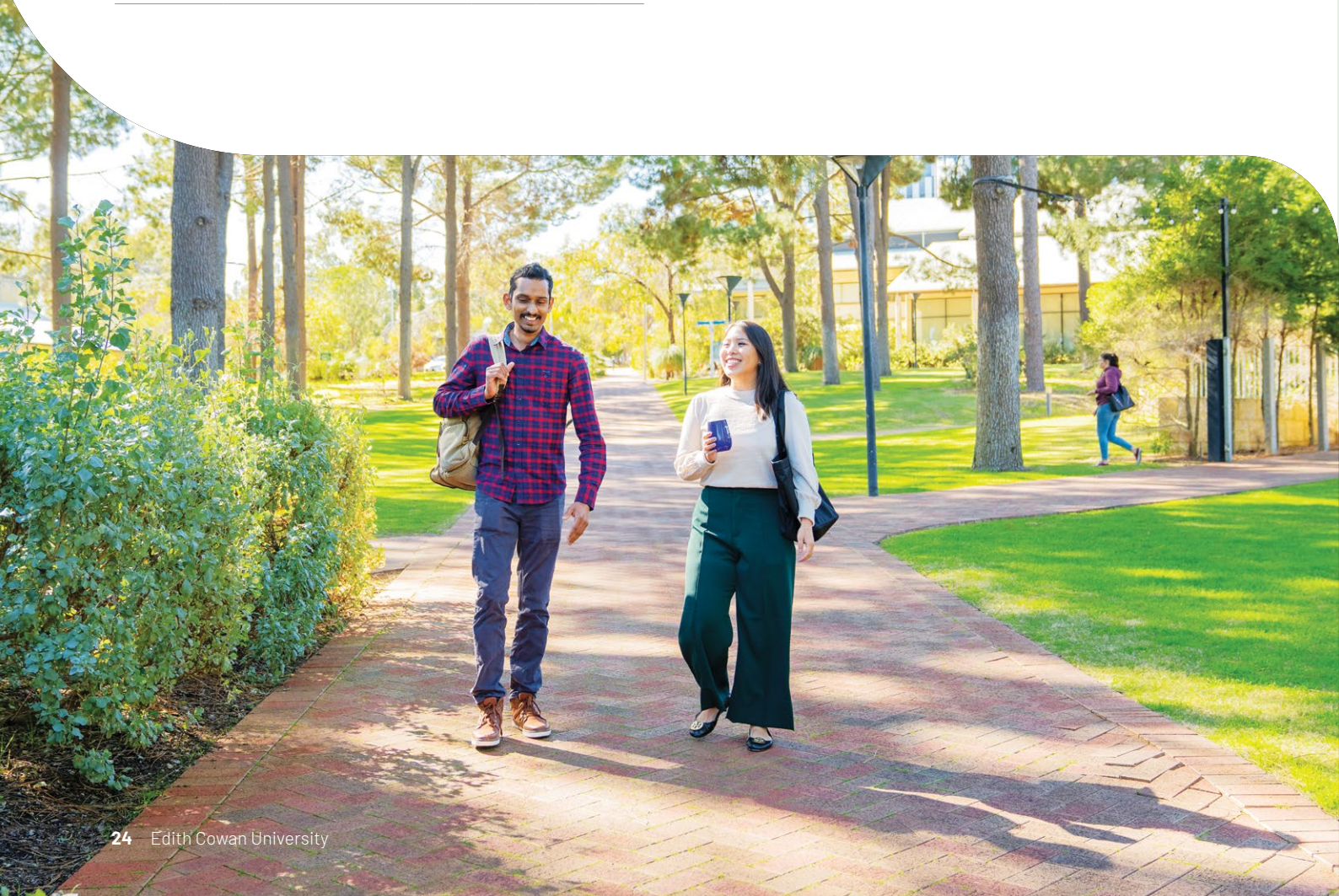
Unit Code	Unit Title	Sem 1	Sem 2	Fee
PSR5101 *	Managing Risk in the Clinical Environment	JO	-	B
NUR6118 *	Nursing in the Context of Global Health	-	JO	B
NUR6117 *	The Deteriorating Patient	JO SW	JO	B

## Science

Unit Code	Unit Title	Sem 1	Sem 2	Fee
SCI6150	Biological Databases and Data Mining	-	JO	B
MAT5212	Biostatistics	JO	JO	A
CSI6230	Computer Networks and Security	-	JO	A
SCI6100	Environmental Monitoring and Investigation	CITY	-	B
SCI6105	Geographical Information Systems and Remote Sensing	-	JO	B
SCI6152	Mass Spectrometry in Systems Biology	-	JO	B
MAT6105	Mathematical Fundamentals	JO	JO	A
CSI6201	Networking Technologies	JO	JO	A
CSI6208	Programming Principles	JO	JO	A
CSI6203	Scripting Languages	JO	JO	A

## Education

Unit Code	Unit Title	Sem 1	Sem 2	Fee
EDU6170	Assessment in Education: Policies, Pedagogy and Equity	-	JO	A
ECE6150 *	Contemporary and Comparative Perspectives in Early Childhood Education	-	JO	A
AED6150 *	Dance, Drama and Media Arts Education in Early Childhood	-	JO	A
EDU6373	Foundation Studies and Current Issues in Special Education	JO	-	A
ECE6145	Inclusive Early Childhood Environments	JO	-	A
ECE6140 *	Investigating Young Children's Holistic Learning and Development	JO	-	A
EDU6120 *	Literacy and Numeracy in Teaching and Learning	JO	-	A
EDU6160 *	Leading Education in a Global Context	JO	-	A
MSC6110	Mathematics and Technologies for Young Children	JO	-	A
SCE6120 *	Science for Young Children	-	JO	A





# How to apply: your study abroad journey

To be eligible for Study Abroad, you will need to meet English and Academic entry requirements.

## English undergraduate and postgraduate entry

Academic IELTS overall minimum band score of 6.0, with no individual band less than 6.0. Visit the English Competency page for equivalent tests [www.ecu.edu.au/future-students/course-entry/english-competency](http://www.ecu.edu.au/future-students/course-entry/english-competency).

You may satisfy English if you have completed 0.375 equivalent full-time study load (EFTSL) of your university degree in English and are from Austria, Belgium, Canada, Denmark, Finland, France, Germany, Iceland, Netherlands, Norway, Sweden or Switzerland.

The Study Abroad program can also be packaged with English through one of our pathway providers. Visit [www.ecu.edu.au/centres/international-office/our-services/agent-support/pathway-partners](http://www.ecu.edu.au/centres/international-office/our-services/agent-support/pathway-partners) for more information.

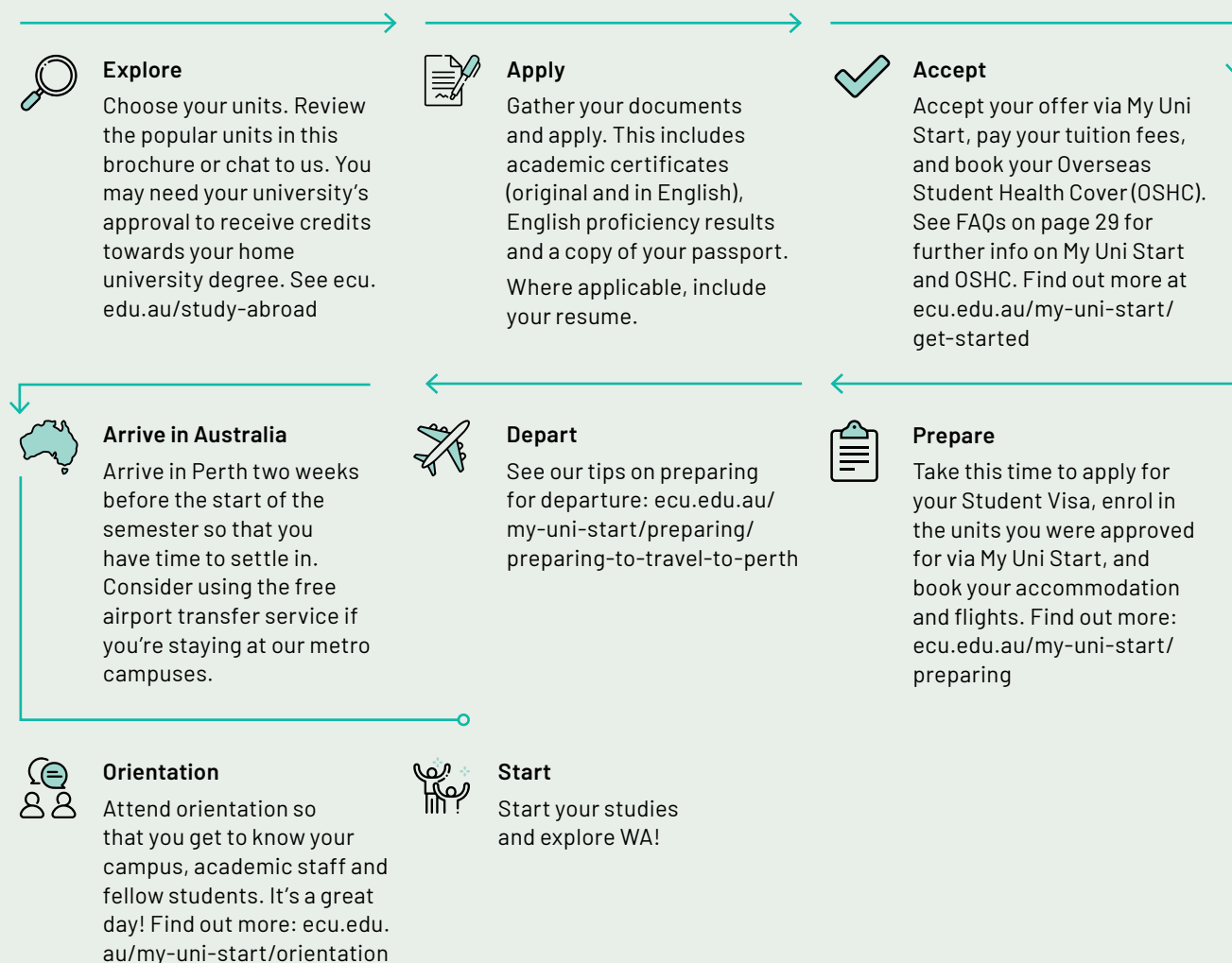
## Academic undergraduate entry (band 3)

Admission may be satisfied through the completion of secondary schooling, an Australian Qualifications Framework (AQF) qualification or successful completion of 0.25 EFTSL of study at bachelor level or higher at an Australian higher education provider (or equivalent).

## Academic postgraduate entry (band 6)

Admission may be satisfied through the completion of a bachelor (undergraduate) degree or higher.

Further information on academic admission can be found on the Course Entry page [www.ecu.edu.au/future-students/course-entry](http://www.ecu.edu.au/future-students/course-entry).



# Where will you study?

**ECU has three campuses in Western Australia, located across Whadjuk and Wardandi land. Each has modern facilities, including wireless internet, 24-hour access to computer labs, libraries with open study spaces and a safe environment for you to study in – either alone or with other students.**

02 mins from Perth Train Station



## ECU City

Located in the heart of the Perth CBD, between the business, entertainment and cultural precincts, our new campus integrates with the Perth Busport.

ECU City will be unique among Australian university campuses, with next-generation technology and learning spaces that will encourage creative thinking and collaboration.

The campus will be home to the world-renowned Western Australian Academy of Performing Arts, along with creative humanities studies in communication, design, broadcasting, and screen production, plus business, law and technology courses.

25 mins from Perth City by train



## ECU Joondalup

The campus is only 25km north of Perth and a short walk or bus ride from the Joondalup Train Station and Lakeside Joondalup, one of the largest shopping centres in WA.

Joondalup Campus features award-winning architecture, cafés, a bar, an outdoor cinema, a lake and loads of trees and green spaces for study.

Here, you can study teacher education, engineering, psychology, nursing, medical and health sciences, cybersecurity and other science-related courses.

2 hours from Perth City by car



## ECU South West

Located two hours' drive south of Perth, ECU South West in Bunbury is the largest university campus in regional Western Australia.

Here, you can expect small, personalised class sizes and courses in commerce, science, health science, nursing, social work and teacher education.

The campus features a café, crèche facilities, multi-purpose sports courts, and a library with 24-hour access to a computer lab.





### Kings Park

One of the largest inner-city parks in the world and home to the spectacular Western Australian Botanic Garden.



### Rottnest Island

A short ferry ride from Perth and home to the infamous Quokka.



### Elizabeth Quay

An exciting waterfront precinct on the banks of the Swan River.



### Perth Zoo

Located close to the CBD, connect with exotic and native animals, learn about conservation and explore lush gardens.



### Optus Stadium

A world class sporting and entertainment venue.



### Caversham Wildlife Park

Up-close experiences with unique Australian animals.



### Swan Valley

Explore WA's oldest wine region featuring heritage walks, trails and wildlife encounters.



### Fremantle

Approximately 30 minutes from the CBD, an abundance of history and eclectic culture awaits at the popular port city.



### South-west region

Renowned for long stretches of picturesque beaches and world-class wineries.

Yanchep

Butler

Western Australia

Joondalup

ECU Joondalup

Ellenbrook

Caversham Wildlife Park

Swan Valley



Midland

Airport Central



Perth City Centre

ECU City Opens 2026

Optus Stadium

Perth Zoo

Rottnest Island

Fremantle

King's Park

Elizabeth Quay

Armadale

Rockingham

Mandurah

To ECU South West, Bunbury



ECU Campuses

Train stations

Attractions

Train lines



# Student Accommodation

**ECU offers international students a variety of accommodation options, including on-campus villages, off-campus private rental properties, and homestay with a Western Australian family.**

## On-Campus Student Village

ECU Villages offer easy, convenient and affordable accommodation across all three campuses. Get an all inclusive concierge experience with the following facilities and inclusions:

- Rent
- Furniture
- 24/7 Support
- Utilities (water, gas, electricity)
- High speed Wi-Fi (unlimited)
- Laundry accessible 24/7
- Outdoor BBQ area
- On-site parking available (additional cost)
- TV Room with Foxtel and gaming consoles (Joondalup)
- Swimming Pool (Joondalup)
- Basketball court (Joondalup)
- Pool table, foosball and table tennis (Joondalup)
- Recreation and lounge area

Due to the high demand for on-campus accommodation, we recommend that you make your online application early.



For more information, visit –  
**[campuslivingvillages.com/australia/perth/edith-cowan-university-village](https://campuslivingvillages.com/australia/perth/edith-cowan-university-village)**

Students staying at an ECU Village can also experience special events including:

- Movie nights
- Community Dinners
- Gaming Nights
- Craft Workshops
- Karaoke Nights (Joondalup)
- Sport Competitions

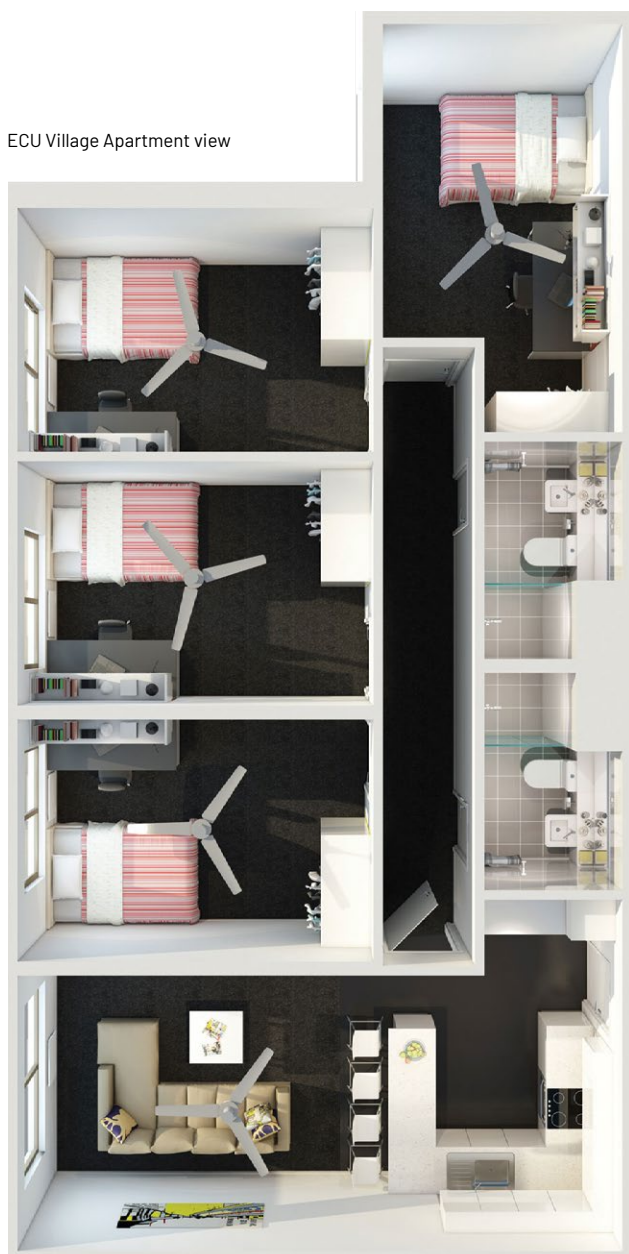


ECU Village – ECU South West Campus





ECU Village Apartment view



## Off-Campus Accommodation

Students may choose to rent an apartment, townhouse or house on their own or with fellow students. Private rental accommodation can be furnished or unfurnished.

For further information on off-campus options, please visit the **Accommodation Resources page** in the Student Support area.



For more information, visit – [intranet.ecu.edu.au/student/support/accommodation-resources](http://intranet.ecu.edu.au/student/support/accommodation-resources)

## Homestay

Students can also choose to live in a private home with an Australian family. The chance to be involved in daily life, the learning of our culture and customs, plus the added advantage of having the company of other people, are just some of the reasons Homestay is popular.



For more information, visit – [homestaynetwork.org/edith-cowan-university](http://homestaynetwork.org/edith-cowan-university)

## Living Costs

Day-to-day living costs will vary, based on personal situations, interests and financial position. Students should plan a budget to suit their needs, but make sure it's flexible enough to allow for changes in circumstances.


For further information on the cost of living in Perth, including a cost of living calculator and resources on budget planning visit StudyPerth.




# Creative thinkers made here.





#### Contact

 +61 8 6304 0000  
(For calls outside Australia)


 [ECU.EDU.AU](http://ECU.EDU.AU)


#### Find us at


 [ecujourney](#)

 [edithcowanuni](#)

 [edithcowanuniversity](#)

 [edithcowanuniversity](#)

 [edithcowanuni](#)

 [school/edith-cowan-university](#)

CRICOS Provider  
No. 00279B  
RTO Code 4756

TEQSA ID PRV12160,  
Australian University